



# Barari Park View

by Al-Mawared.ae



**UNPARALLELED  
LIVING EXPERIENCE**



## AN OASIS IN THE HEART OF DUBAI

BARARI PARKVIEW OFFERS THE PERFECT BALANCE BETWEEN CITY LIVING AND A CALM, NATURAL ENVIRONMENT, IT IS YOUR PEACEFUL GETAWAY IN THE HEART OF DUBAI.

IT'S A SANCTUARY WHERE YOU CAN UNWIND AND RELAX, WHILE STILL BEING CLOSE TO THE PULSE OF THE CITY.









Al Mawared  
Properties







## BUILDING FACTS

PROPERTY TYPE

**RESIDENTIAL AND RETAIL**

---

PLOT AREA

**5,825.04 M<sup>2</sup> / 62,700.21 Ft<sup>2</sup>**

---

NUMBER OF UNITS

RESIDENTIAL

**195 UNITS**

SHOPS

**4 UNITS**

---

TOTAL UNITS

1 BEDROOM

**135 UNITS**

3 BEDROOM

**56 UNITS**

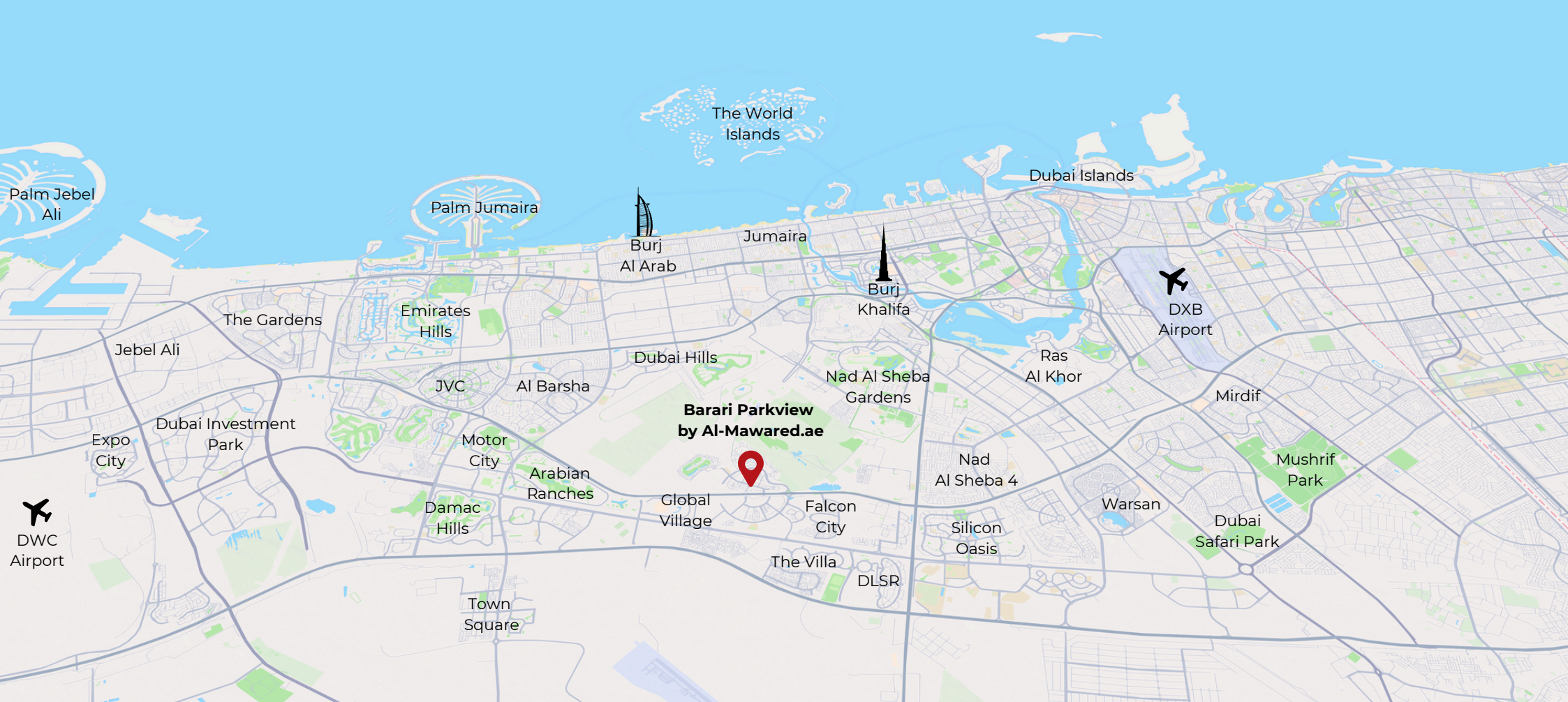
2 BEDROOM

**1 UNITS**

PENTHOUSE

**3 UNITS**





05 Minutes

**Global Village**

01 Minutes

**Dunecrest American School**

20 Minutes

**Dubai Mall & Burj Khalifa**

15 Minutes

**Ras Al Khor Wildlife Sanctuary**

15 Minutes

**Maydan Racecourse**

20 Minutes

**Museum of the Future**

15 Minutes

**Dubai International Financial Centre**

15 Minutes

**Dubai World Trade Centre**

20 Minutes

**Palm Jumeirah**

20 Minutes

**Emirates Golf Club**

20 Minutes

**Dubai International Airport**

20 Minutes

**Dubai World Central Airport**



Al Mawared  
Properties





AI Mawared  
Properties





## UNMATCHED AMENITIES FOR A LIFESTYLE OF LEISURE AND WELLNESS

EXPERIENCE A RANGE OF THOUGHTFULLY DESIGNED AMENITIES AT BARARI PARKVIEW, FROM A ROOFTOP INFINITY POOL AND OUTDOOR CINEMA TO A HEALTH CLUB, YOGA LAWN, AND SMART HOME FEATURES. WHETHER YOU'RE SEEKING RELAXATION OR RECREATION, THERE'S SOMETHING FOR EVERY LIFESTYLE.



HEALTH CLUB



OUTDOOR CINEMA



ROOFTOP INFINITY SWIMMING POOL



KIDS PLAY AREA



SMART HOME



RUNNING TRACK



ENTERTAINMENT ROOM



YOGA LAWN



LEISURE POOL DECK



SEATING AREA



SAUNA ROOM



STEAM ROOM



PLAYGROUND COURT



CHESS PLAY AREA



TABLE TENNIS





## COMMUNITY AMENITIES FOR AN ACTIVE AND BALANCED LIFESTYLE



ENJOY A VIBRANT COMMUNITY BUILT FOR WELLNESS AND RECREATION WITH CYCLING TRACKS, SPORTS COURTS, PARKS, AND FAMILY PLAY AREAS ALL DESIGNED TO KEEP YOU ACTIVE, CONNECTED, AND INSPIRED EVERY DAY.



CYCLE TRACK



FOOTBALL FIELD



BASKETBALL COURT



TENIS COURT



FITNESS AREA



KIDS PLAY AREA



FOOTPATH



PARKS



\* IMAGE IS AN ARTIST'S IMPRESSION FOR ILLUSTRATIVE PURPOSES ONLY AND DOES NOT REPRESENT THE ACTUAL APPEARANCE OF THE MAJAN COMMUNITY.

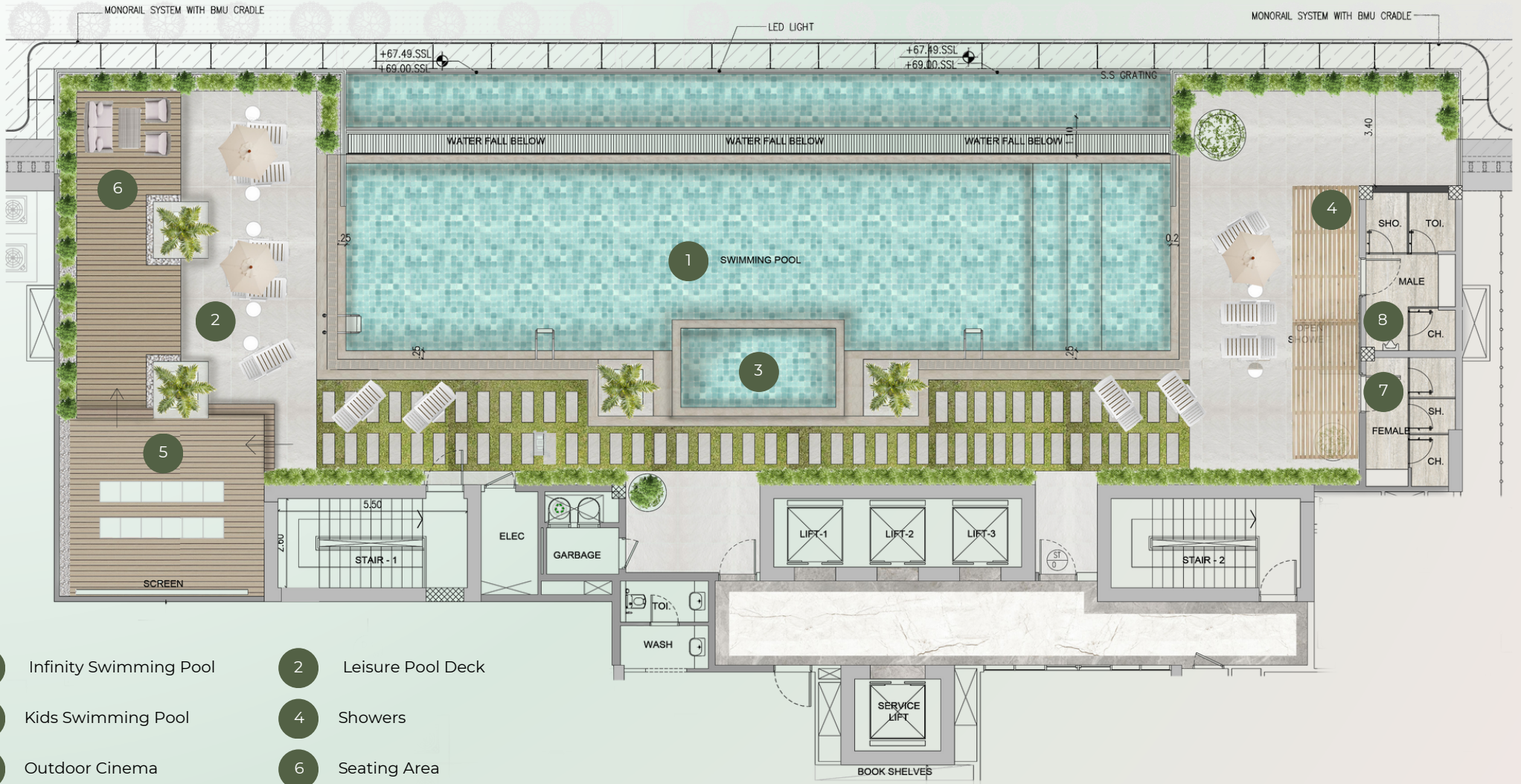
**STATE OF THE ART  
ROOF TOP HEALTH  
CLUB**





- 1 Paddle Court
- 2 Seating Area
- 3 Yoga Lawn
- 4 Chess Play Area
- 5 Kids Playground
- 6 Running Track

## First Floor Outdoor Amenities

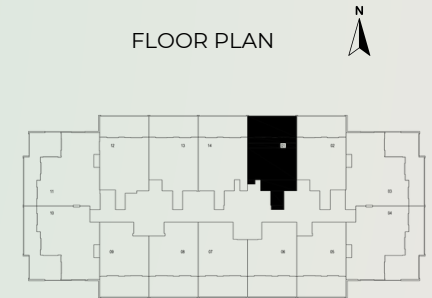
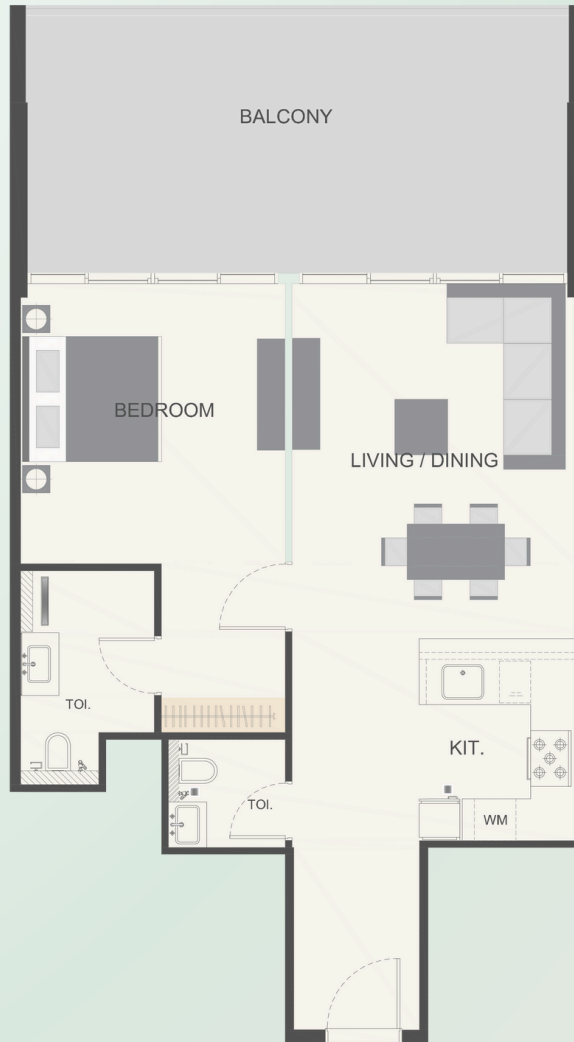


- 1 Infinity Swimming Pool
- 2 Leisure Pool Deck
- 3 Kids Swimming Pool
- 4 Showers
- 5 Outdoor Cinema
- 6 Seating Area
- 7 Female WC
- 8 Male WC

## Zen Floor Outdoor Amenities







## 1 BEDROOM APARTMENT - 01 SERIES

Indoor Living Area

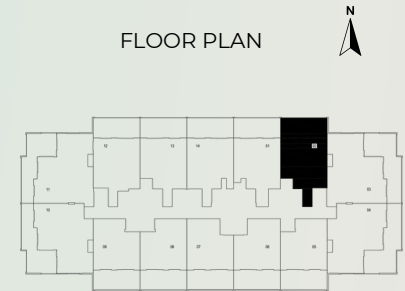
759.39 Sq.ft<sup>2</sup>

Outdoor Living Area

338.63 Sq.ft<sup>2</sup>

Total Living Area

1098.02 Sq.ft<sup>2</sup>



## 1 BEDROOM APARTMENT - 02 SERIES

Indoor Living Area

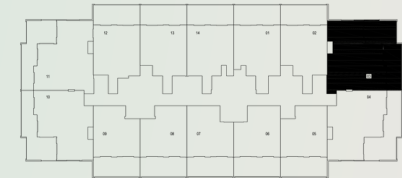
741.52 Sq.ft<sup>2</sup>

Outdoor Living Area

341.32 Sq.ft<sup>2</sup>

Total Living Area

1082.84 Sq.ft<sup>2</sup>

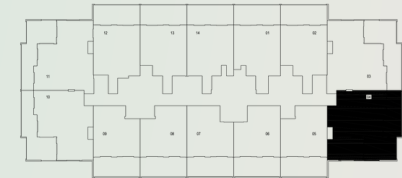


## 3 BEDROOM APARTMENT - 03 SERIES

Indoor Living Area  
1218.58 Sq.ft<sup>2</sup>

Outdoor Living Area  
413.11 Sq.ft<sup>2</sup>

Total Living Area  
1631.70 Sq.ft<sup>2</sup>



## 3 BEDROOM APARTMENT - 04 SERIES

Indoor Living Area

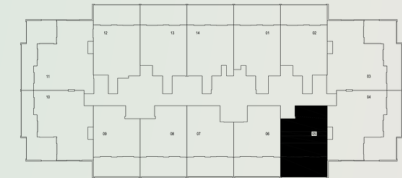
1162.60 Sq.ft<sup>2</sup>

Outdoor Living Area

412.90 Sq.ft<sup>2</sup>

Total Living Area

1575.51 Sq.ft<sup>2</sup>



## 1 BEDROOM APARTMENT - 05 SERIES

Indoor Living Area

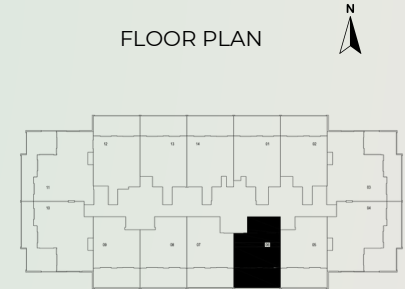
679.52 ft<sup>2</sup>

Outdoor Living Area

341.43 ft<sup>2</sup>

Total Living Area

1020.95 ft<sup>2</sup>



## 1 BEDROOM APARTMENT - 06 SERIES

Indoor Living Area

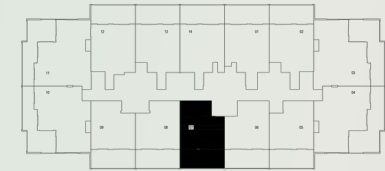
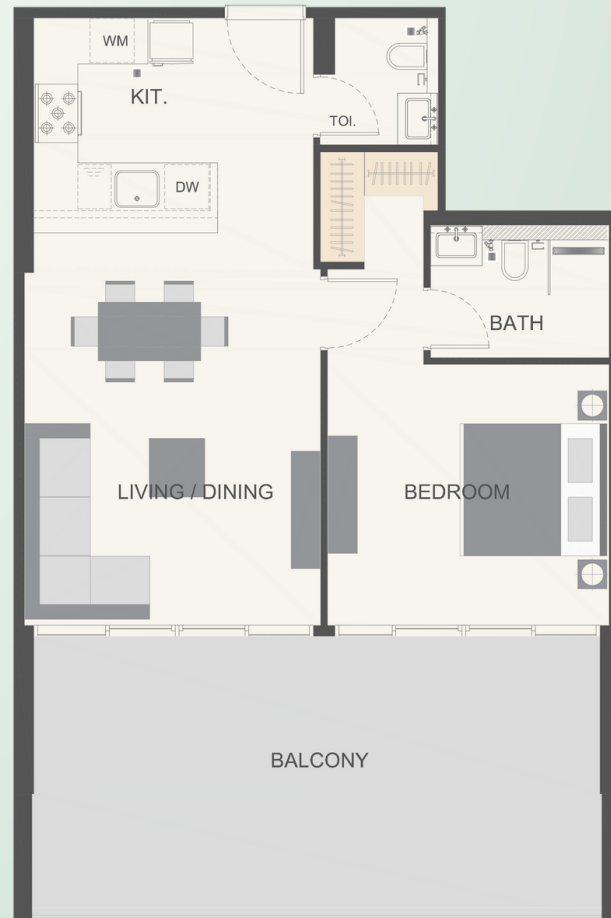
674.78 Sq.ft<sup>2</sup>

Outdoor Living Area

338.84 Sq.ft<sup>2</sup>

Total Living Area

1013.63 Sq.ft<sup>2</sup>



## 1 BEDROOM APARTMENT - 07 SERIES

Indoor Living Area

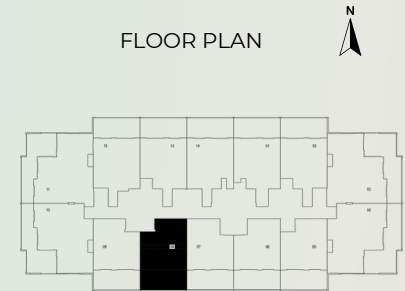
664.13 Sq.ft<sup>2</sup>

Outdoor Living Area

338.74 Sq.ft<sup>2</sup>

Total Living Area

1002.87 Sq.ft<sup>2</sup>



## 1 BEDROOM APARTMENT - 08 SERIES

Indoor Living Area

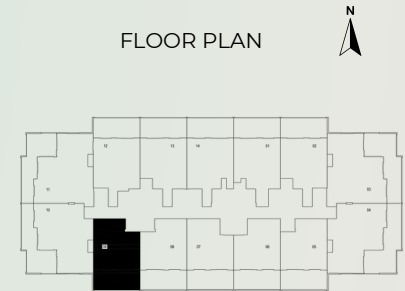
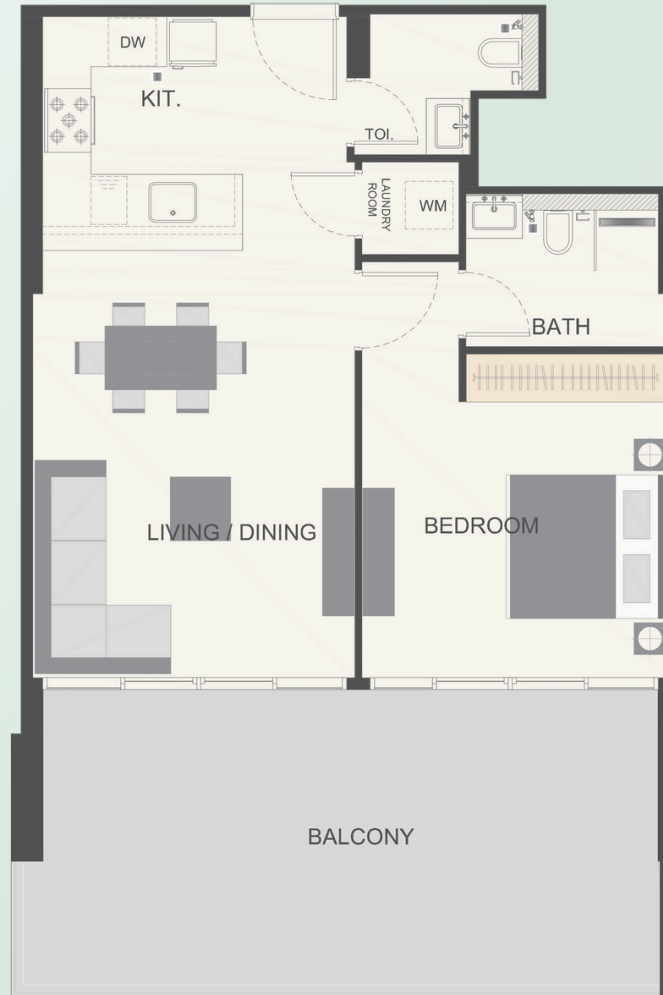
674.68 Sq.ft<sup>2</sup>

Outdoor Living Area

338.74 Sq.ft<sup>2</sup>

Total Living Area

1013.42 Sq.ft<sup>2</sup>



## 1 BEDROOM APARTMENT - 09 SERIES

Indoor Living Area

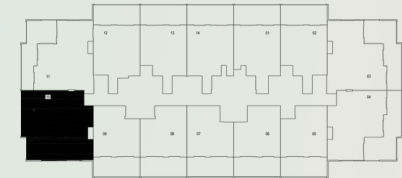
684.26 Sq.ft<sup>2</sup>

Outdoor Living Area

341.86 Sq.ft<sup>2</sup>

Total Living Area

1026.12 Sq.ft<sup>2</sup>



### 3 BEDROOM APARTMENT - 10 SERIES

Indoor Living Area

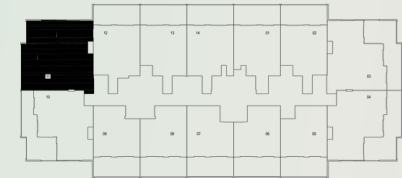
1160.34 Sq.ft<sup>2</sup>

Outdoor Living Area

361.23 Sq.ft<sup>2</sup>

Total Living Area

1521.58 Sq.ft<sup>2</sup>



### 3 BEDROOM APARTMENT - 11 SERIES

Indoor Living Area

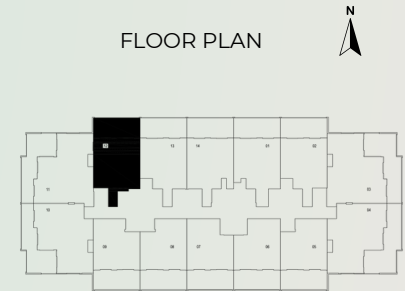
1220.08 Sq.ft<sup>2</sup>

Outdoor Living Area

361.34 Sq.ft<sup>2</sup>

Total Living Area

1581.43 Sq.ft<sup>2</sup>



## 1 BEDROOM APARTMENT - 12 SERIES

Indoor Living Area

789.42 Sq.ft<sup>2</sup>

Outdoor Living Area

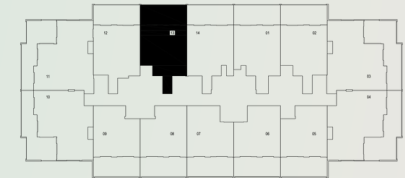
341.32 Sq.ft<sup>2</sup>

Total Living Area

1130.74 Sq.ft<sup>2</sup>



FLOOR PLAN



## 1 BEDROOM APARTMENT - 13 SERIES

Indoor Living Area

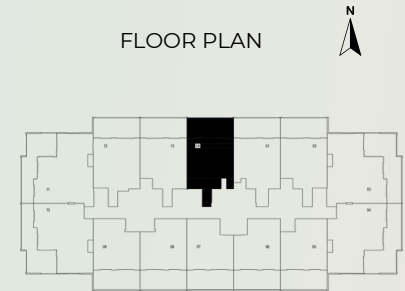
745.40 Sq.ft<sup>2</sup>

Outdoor Living Area

338.84 Sq.ft<sup>2</sup>

Total Living Area

1084.24 Sq.ft<sup>2</sup>



## 1 BEDROOM APARTMENT - 14 SERIES

Indoor Living Area

758.20 Sq.ft<sup>2</sup>

Outdoor Living Area

338.84 Sq.ft<sup>2</sup>

Total Living Area

1097.05 Sq.ft<sup>2</sup>



# Barari Park View

by Al-Mawared.ae



[properties@al-mawared.ae](mailto:properties@al-mawared.ae)

[+971 54 584 9999](tel:+971545849999)

[al-mawared.ae](http://al-mawared.ae)